



## The Chestnut | Studio | 265 sq. ft.

16001 Loves Mill Lane, Gainesville, VA 20155 | (703) 952-1959 | [harperstationgainesville.com](http://harperstationgainesville.com)

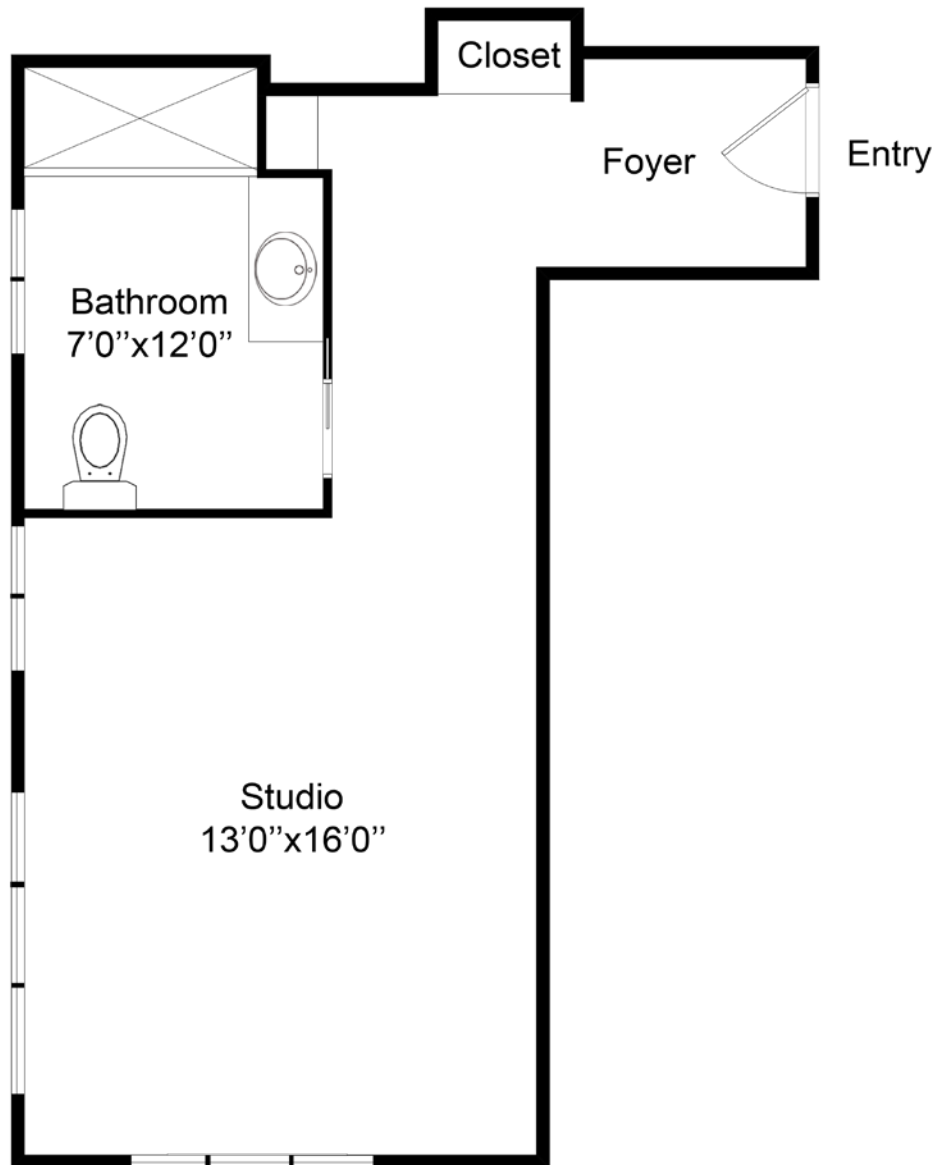
Independent Living, Assisted Living and Memory Care | An SRI Managed Community



## The Chestnut | Studio | 265 sq. ft.

16001 Loves Mill Lane, Gainesville, VA 20155 | (703) 952-1959 | [harperstationgainesville.com](http://harperstationgainesville.com)

Independent Living, Assisted Living and Memory Care | An SRI Managed Community



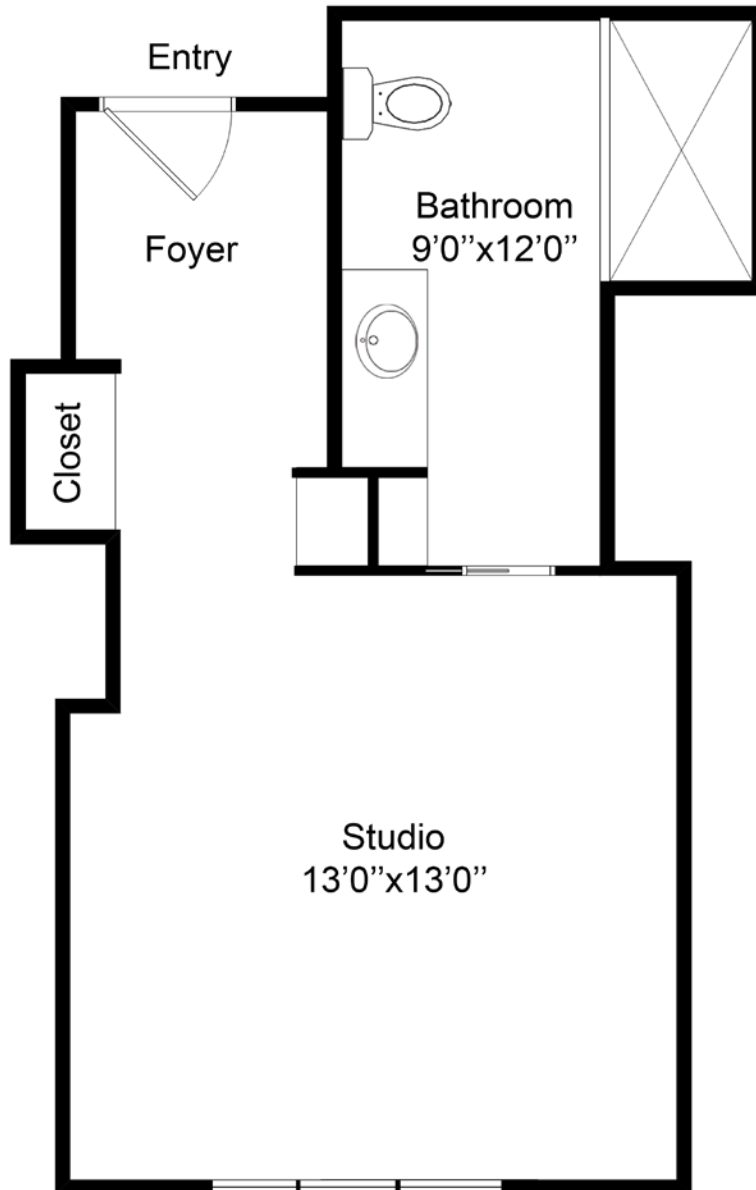
**The Dogwood** | Studio | 391 sq. ft.



## The Dogwood | Studio | 391 sq. ft.

16001 Loves Mill Lane, Gainesville, VA 20155 | (703) 952-1959 | [harperstationgainesville.com](http://harperstationgainesville.com)

Independent Living, Assisted Living and Memory Care | An SRI Managed Community



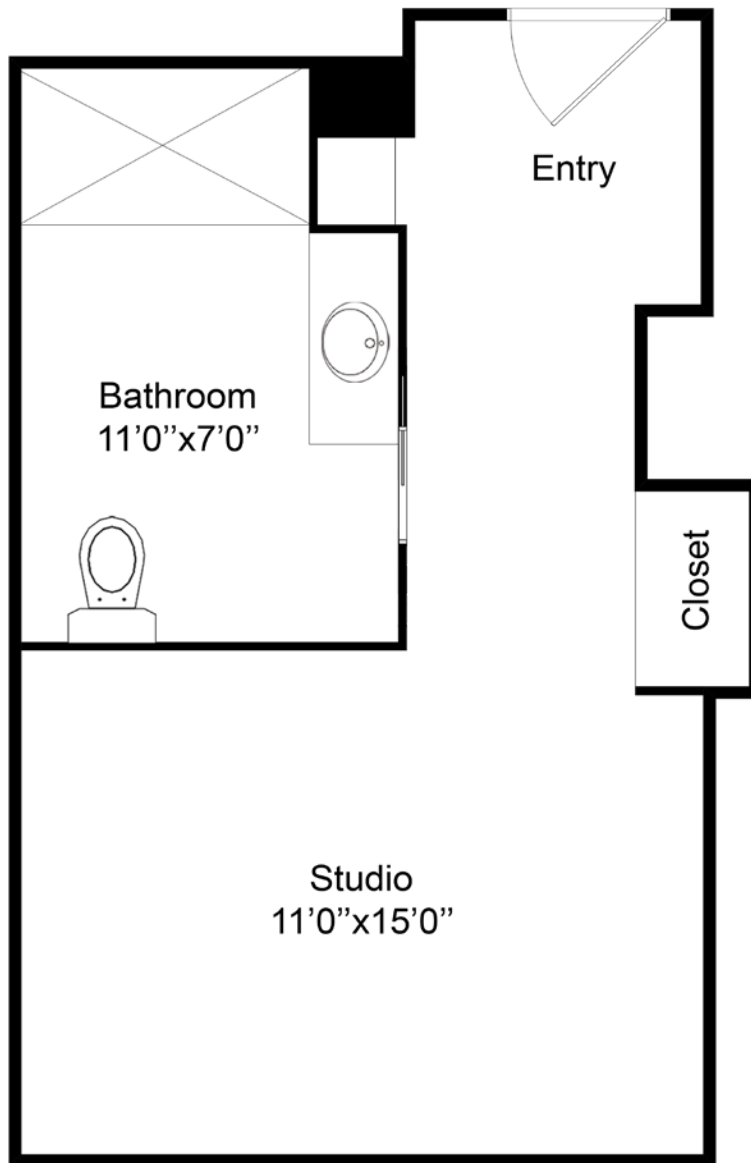
**The Magnolia** | Studio | 310 sq. ft.



## The Magnolia | Studio | 310 sq. ft.

16001 Loves Mill Lane, Gainesville, VA 20155 | (703) 952-1959 | [harperstationgainesville.com](http://harperstationgainesville.com)

Independent Living, Assisted Living and Memory Care | An SRI Managed Community



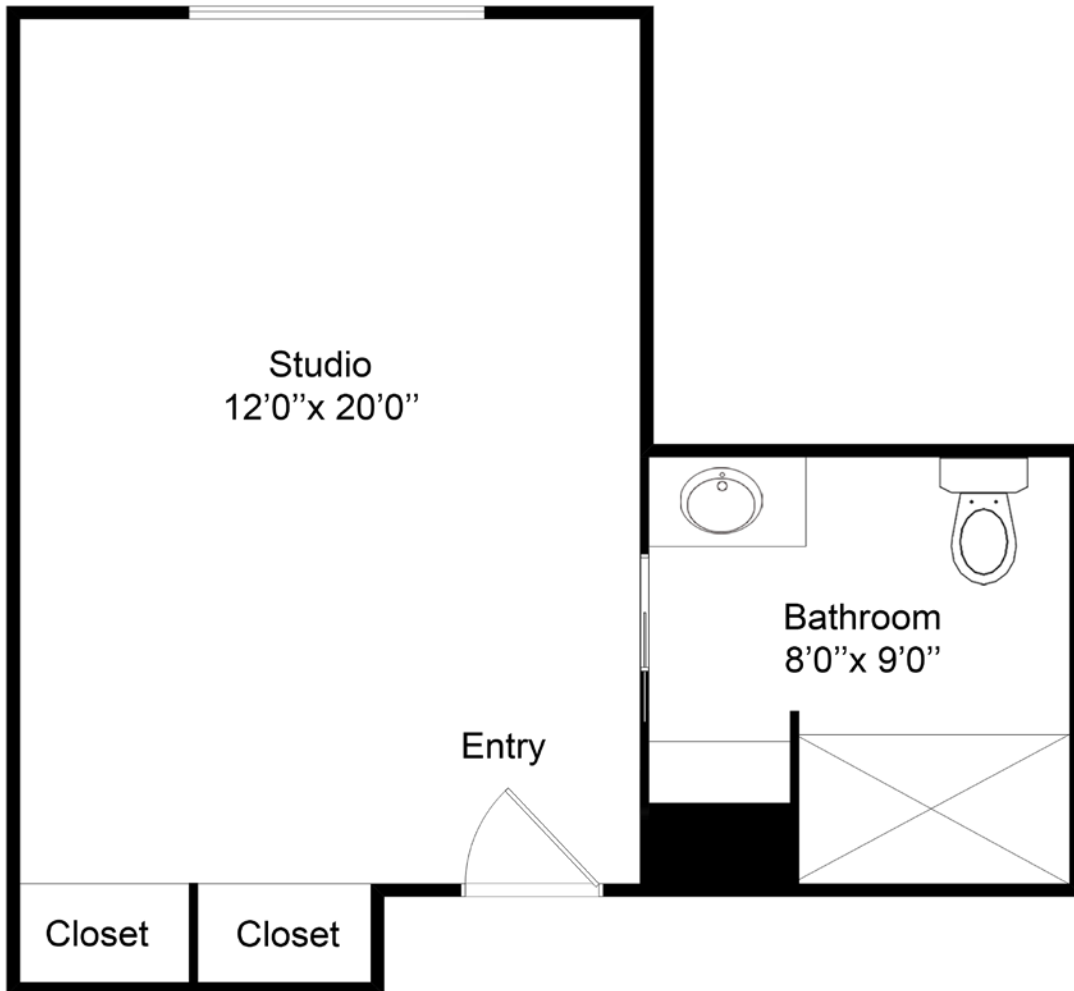
**The Maple** | Studio | 285 sq. ft.



## The Maple | Studio | 285 sq. ft.

16001 Loves Mill Lane, Gainesville, VA 20155 | (703) 952-1959 | [harperstationgainesville.com](http://harperstationgainesville.com)

Independent Living, Assisted Living and Memory Care | An SRI Managed Community



## The Sycamore A | Studio | 305 sq. ft.

16001 Loves Mill Lane, Gainesville, VA 20155 | (703) 952-1959 | [harperstationgainesville.com](http://harperstationgainesville.com)

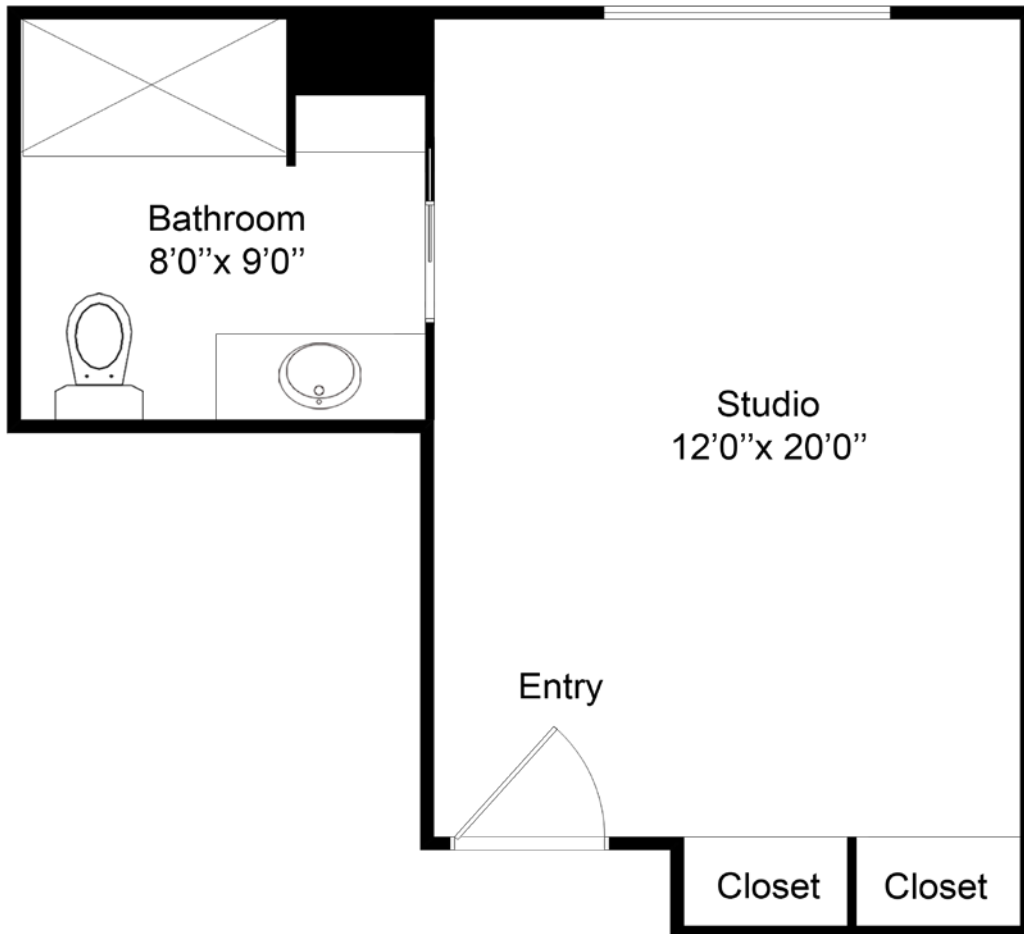
Independent Living, Assisted Living and Memory Care | An SRI Managed Community



## The Sycamore A | Studio | 305 sq. ft.

16001 Loves Mill Lane, Gainesville, VA 20155 | (703) 952-1959 | [harperstationgainesville.com](http://harperstationgainesville.com)

Independent Living, Assisted Living and Memory Care | An SRI Managed Community



## The Sycamore B | Studio | 305 sq. ft.

16001 Loves Mill Lane, Gainesville, VA 20155 | (703) 952-1959 | [harperstationgainesville.com](http://harperstationgainesville.com)

Independent Living, Assisted Living and Memory Care | An SRI Managed Community



## The Sycamore B | Studio | 305 sq. ft.

16001 Loves Mill Lane, Gainesville, VA 20155 | (703) 952-1959 | [harperstationgainesville.com](http://harperstationgainesville.com)

Independent Living, Assisted Living and Memory Care | An SRI Managed Community